

Housatonic River Remediation Project

DREDGING EQUIPMENT



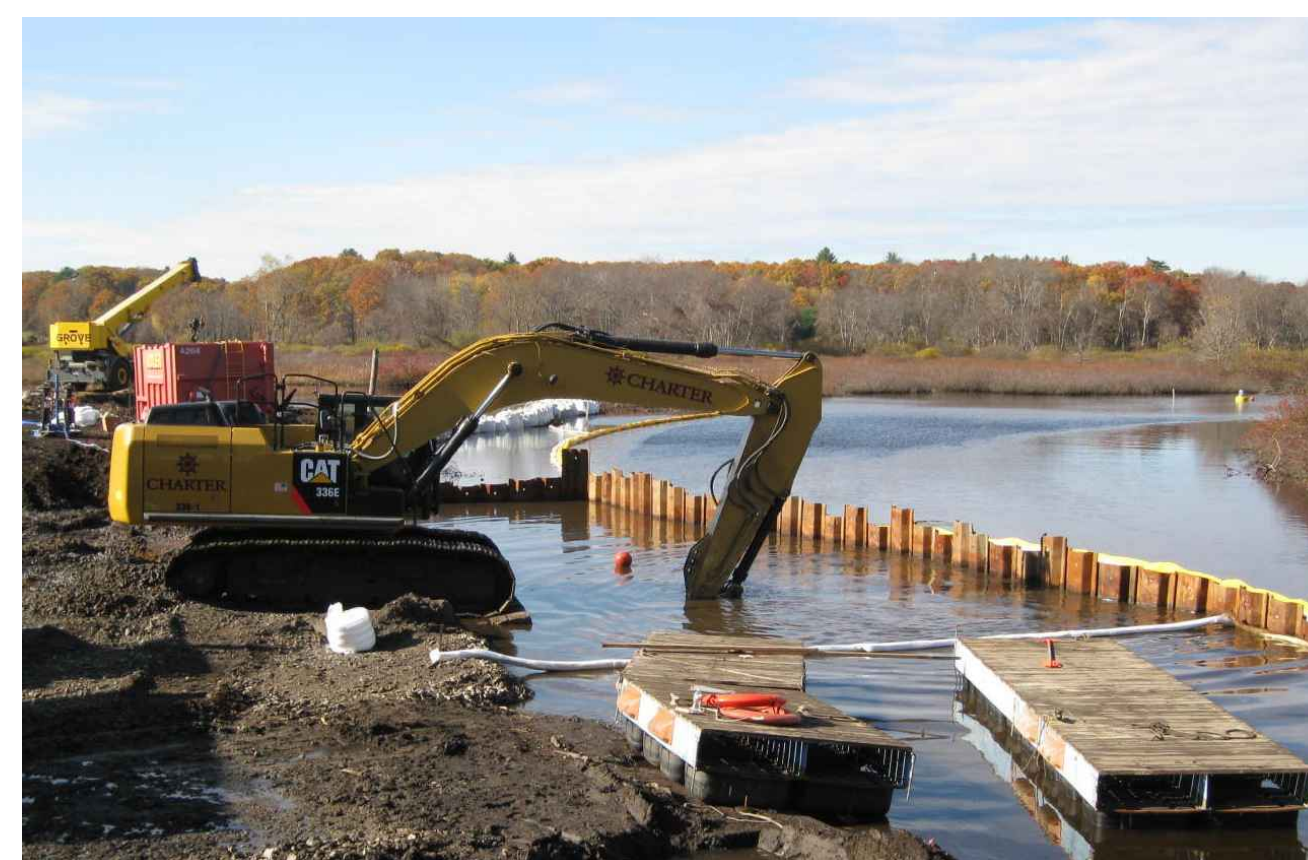
DIPPER DREDGER



BARGE DREDGER WITH EXCAVATOR



DREDGER WITH HYDRAULIC EQUIPMENT

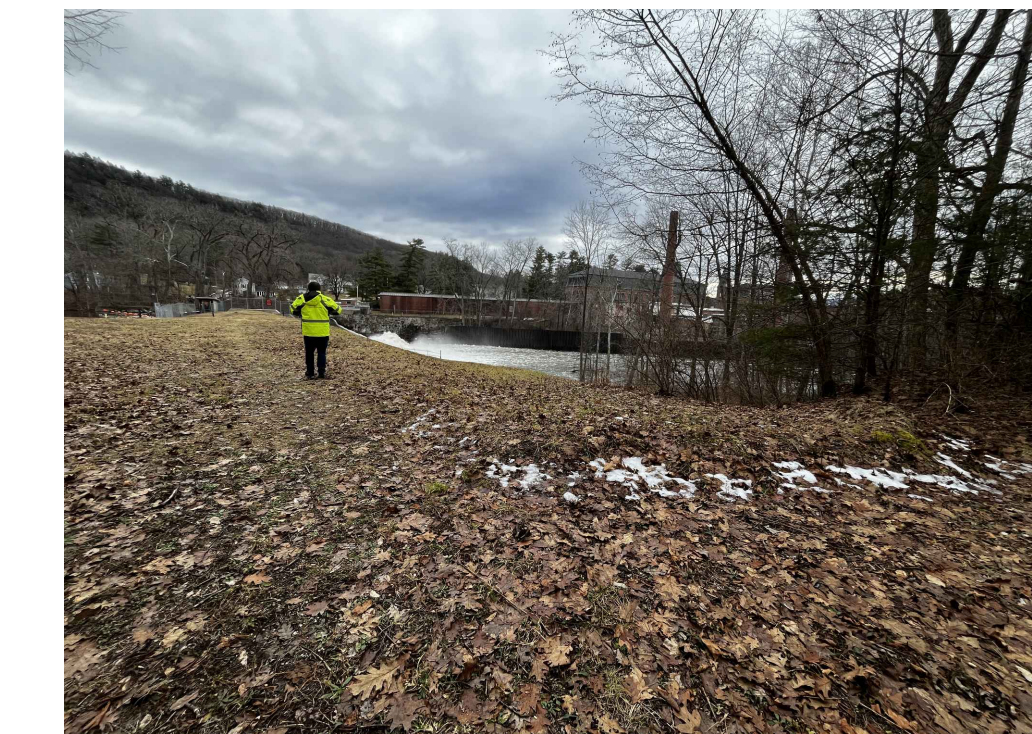


MECHANICAL DREDGING

SITE PHOTOS



APPROXIMATELY 0.85 MILES OF RAILROAD SIDING ALONG VAN DEUSENVILLE ROAD, GREAT BARRINGTON, NEAR REACH 8



RISING POND DAM - ACCESS POINT TO HOUSATONIC RIVER FROM VAN DEUSENVILLE ROAD, GREAT BARRINGTON, RAILROAD SIDING IN REACH 8



RAILROAD SIDING AT THE ONYX SPECIALTY PAPER FACILITY LOCATED AT 1075 PLEASANT STREET, LEE, ALONG REACH 7D



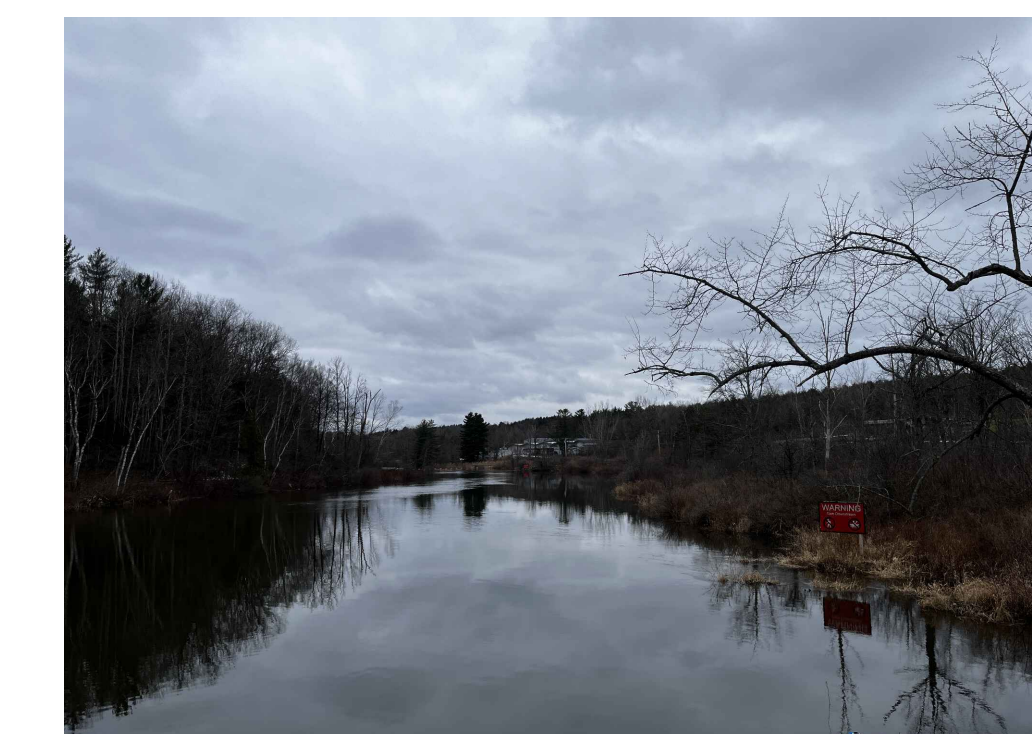
AREA SURROUNDING RAILROAD SIDING TO THE ONYX SPECIALTY PAPER FACILITY LOCATED AT 1075 PLEASANT STREET, LEE, ALONG REACH 7D



VIEW LOOKING TO THE SOUTHWEST OF THE UPLAND DISPOSAL FACILITY ALONG REACH 7A



APPROXIMATELY 0.50 MILES OF RAILROAD SIDING ADJACENT TO THE BERKSHIRE SCENIC RAILWAY MUSEUM IN LENOX NEAR REACH 6



HOUSATONIC RIVER LOOKING SOUTH FROM THE PEDESTRIAN BRIDGE CROSSING IN LENOX (REACH 6)